

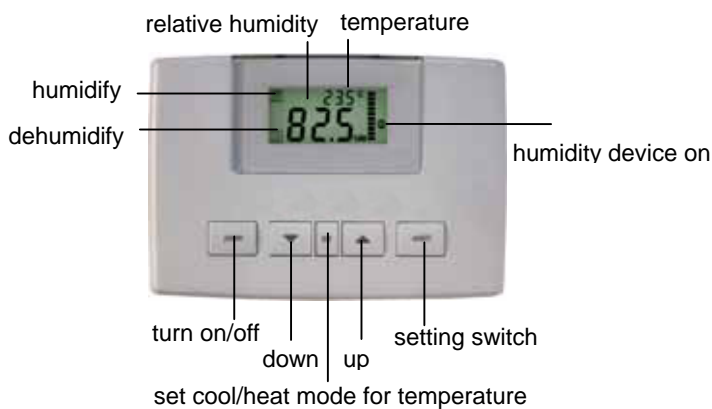
DIGITAL HUMIDITY CONTROLLER

Relative Humidity Control for Humidifier or Dehumidifier
With Temperature Detection/Control

□ Features

- ◆ Designed for monitoring and control the ambience relative humidity by control a humidifier or dehumidifier
- ◆ Temperature detection and control optional
- ◆ Microprocessor makes detection and controlling more accurately
- ◆ LCD can display working status such as %RH, temperature, set point, and device mode, etc. Makes reading and operating easy and accurate
- ◆ All models feature user-friendly setting buttons
- ◆ Enough parameters setup let the controller meeting wide range application. All setup will be held even if them power failure
- ◆ Lock function avoids wrong operation and makes setting to be held
- ◆ Especially provide two models with 8A outlet current to connect the humidity device directly. Both wall mounting type and convenient plug-and-play type selectable.
- ◆ Infrared Remote Control (optional)
- ◆ Blue backlight (optional)
- ◆ RS 485 communication interface (optional)
- ◆ External sensors (optional)
- ◆ We also provide smart hygrostat with mould-proof function, please see F2000LB-HygroPro Datasheet
- ◆ For humidity & temperature transmitters, please see F2000TSM-TH series

□ Buttons and LCD



F2000P-TH/F2000PC-TH



F2000LB-H1/F2000LB-TH
& F2000LH series



F2000LH-RE-PnP Plug and play type

□ Models

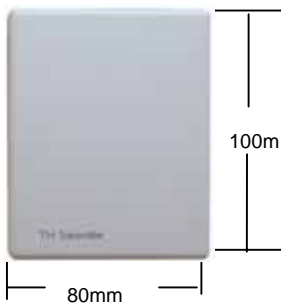
Product Name	Model	Description
Humidity Controller Power supply: -(A)/(B)/(C)/48 A: 220VAC B: 110VAC C: 24 VAC 48: 18~48VDC	F2000LB-H1-(C)	Monitoring temperature, setting humidity, 1 ON/OFF triac output to control a humidifier or a dehumidifier.
	F2000LB-TH-K01-(C)/48	Monitoring temperature, setting humidity, 1 ON/OFF relay output to control a humidifier or a dehumidifier.
	F2000LB-TH-K02-(C)/48	Monitoring temperature, setting humidity, 2 ON/OFF relay outputs to control a humidifier or a dehumidifier, also control a AC device or a fan.
	F2000P-TH-01-(A)/(B)(C)	Detection temperature and humidity, 1XON/OFF triac output to control a humidifier or dehumidifier.
	F2000P-TH-02-(A)/(B)(C)	Detection temperature and humidity, 2 ON/OFF outputs to control humidifier/ dehumidifier and a cooling/heating device.
	F2000P-TH-01-J-(A)/(B)(C)	F2000P-TH-01 function, it need be connected with the external humidity sensor (WT)
	F2000P-TH-02-J-(A)/(B)(C)	F2000P-TH-02 function, it need be connected with the external humidity sensor and the temperature sensor (W and WT)
Humidity Controller with RS485 interface	F2000PC-TH-01-(A)/(B)(C)	Detection temperature and humidity, 1XON/OFF triac output to control a humidifier or dehumidifier. RS485 communication interface.
	F2000PC-TH-02-(A)/(B)(C)	Detection temperature and humidity, 2XON/OFF triac outputs to control a humidifier/dehumidifier and a AC device or a fan.. RS485 communication interface.
Split Humidity Control Unit	F2000PC-TH-01-TSM-(A)/(B)(C)	Humidity controller with temperature detection, it's used with a external sensor box (wall mounting type or duct type) together via RS485 connection
	F2000PC-TH-02-TSM-(A)/(B)(C)	Temperature &humidity controller , it's used with a external sensor box (wall mounting type or duct type) together via RS485 connection
	External sensor box F2000TSM-TH-M101-N	Wall mounting external sensor box with the humidity sensor inside. It must be connected with F2000PC-TH-01-TSM by RS485. The maximum connecting length is 100 meters.
	External sensor box F2000TSM-TH-M201-N	Wall mounting external sensor box with the humidity& temperature sensors inside. It must be connected with F2000PC-TH-02-TSM by RS485. The maximum connecting length is 100 meters.
	External sensor box F2000TSM-TH-D101-N	Duct type of external sensor box with the humidity sensor inside. It can be put into an air duct and must be connected with F2000PC-TH-01-TSM by RS485.
	External sensor box F2000TSM-TH-D201-N	Monitoring temperature, setting humidity , 1 ON/OFF output to control a humidifier or a dehumidifier (selectable)
Options for Above Models		
Accessories	Back light- EL	Blue back light displaying
	Remote receiving- R	Remote control humidity with the infrared hand held controller
	External temperature sensor - W	External temperature sensor with 2.5-4 meters length
	External humidity sensor- WT	External humidity sensor –Humirel HS1500
Product Name	Model	Description

Humidity Controller with 8A outlet Power supply: A: 220VAC	F2000LH-RE-01	Monitoring temperature and humidity, 1 ON/OFF relay output to control a dehumidifier/humidifier. Max load is 8A (inductive load) or 16A(resistant load)
	F2000LH-RE-PnP	Monitoring temperature and humidity, 1 ON/OFF relay output to control a dehumidifier/humidifier. Plug and play. Max load is 8A (inductive load) or 16A(resistant load)

□ Specifications

Power supply	220VAC±10%, 24VAC±10%, 18~48VDC selectable in orders
Output	
F2000P-TH/F2000LB-H1	Triac output, rated 1Amp for 1x On/Off
F2000LB-TH-K01/K02	3A relay output for 1xOn/Off
F2000LH-RE series	8A relay output
Sensor	Temperature: NTC Humidity: capacitive sensor
Measured range of temperature	5~60 (41 ~95)
Accuracy of measurement temperature	±0.5 (±1) @25
Monitoring and setting range of humidity	5~95%RH
Accuracy of measurement humidity	±3%RH @25
Displaying	LCD
Connection length between the controller with the external sensor box	Maximum 100 meters
Net weight of the controller	F2000LB-H1/F2000LB-TH-K: 230g F2000P-TH/PC-TH: 280g F2000LH-RE-01: 310g F2000LH-RE-Pnp: 800g (plug and play type)
Dimensions	F2000LB-H1: 120mm(L)×90mm(W)×24mm(H) F2000P-TH/PC-TH: 120mm(L)×90mm(W)×32mm(H) F2000LH-RE: 120mm(L) × 90mm(W) × 24mm(H)+28.5mm(bulge) F2000LH-RE-PnP: 197mm(L) × 90mm(W) × 79mm(H)
Mounting standard	Wall mounting in the wire box of 2"x4" or 65mm×65mm

F2000TSM-TH-M201-N sensor box



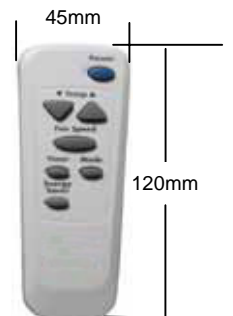
Humidity Sensor (WT)



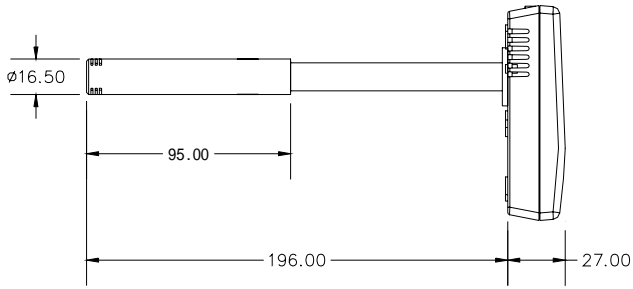
Temperature sensor (W)



Handle remote controller (R)



F2000TSM-TH-D201-N sensor box

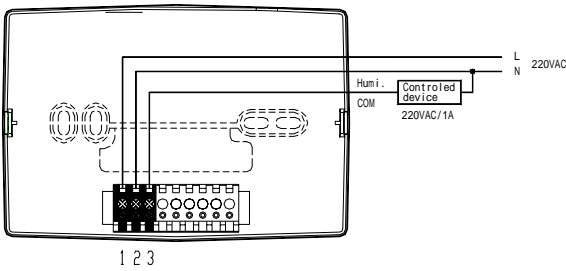


F2000LH-RE-01

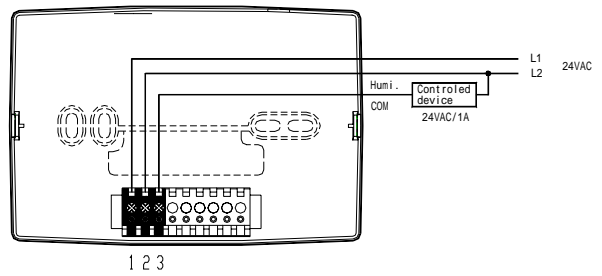


□ Wiring Diagrams

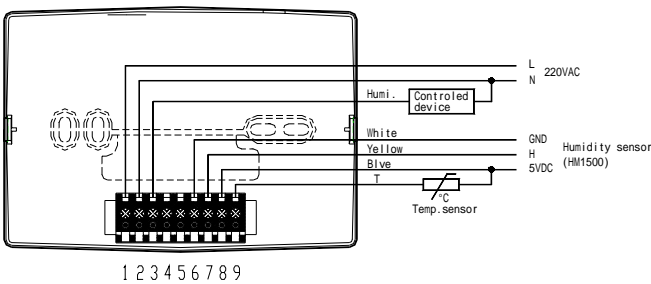
F2000P-TH-01-(A)



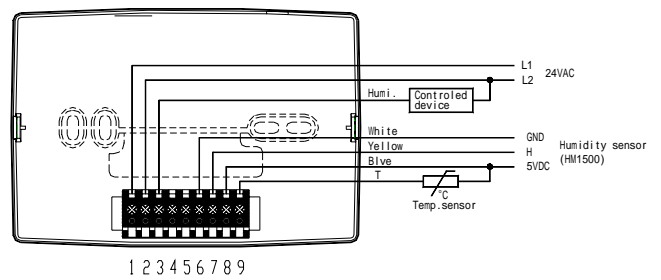
F2000P-TH-01-(C)



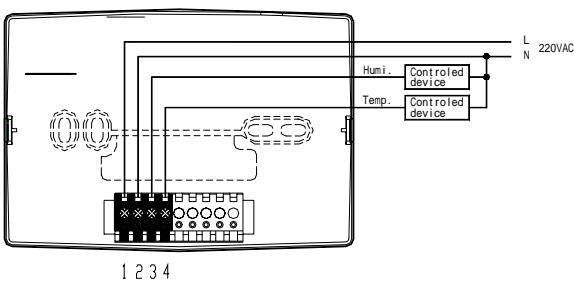
F2000P-TH-01-W/WT-(A)



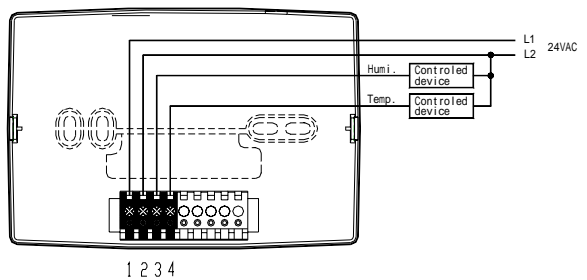
F2000P-TH-01-W/WT-(C)



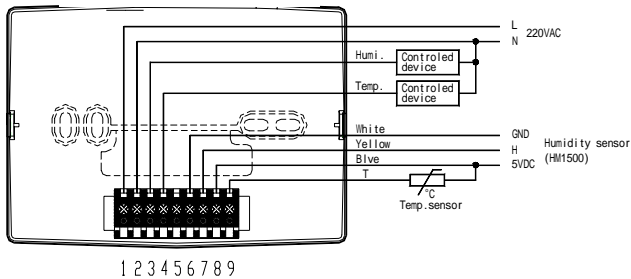
F2000P-TH-02-(A)



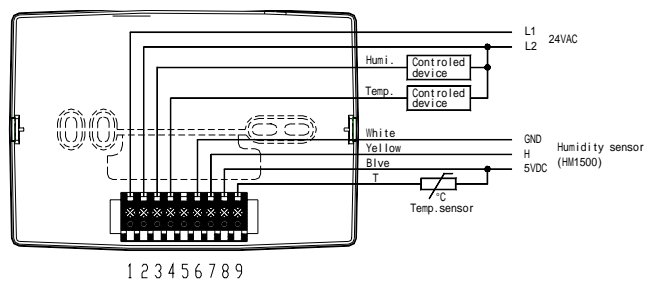
F2000P-TH-02-(C)



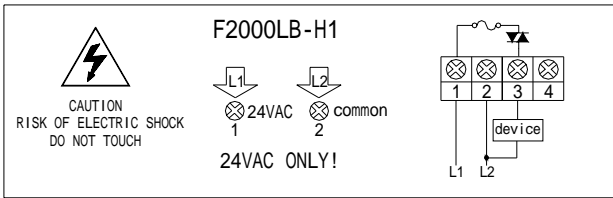
F2000P-TH-02-W/WT-(A)



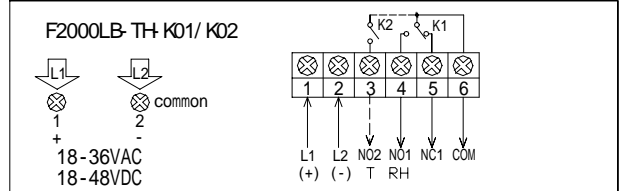
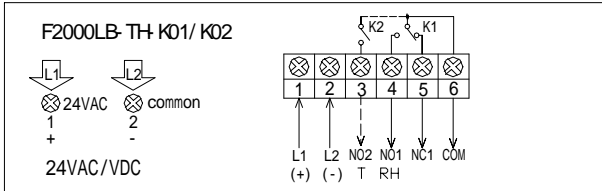
F2000P-TH-02-W/WT-(C)



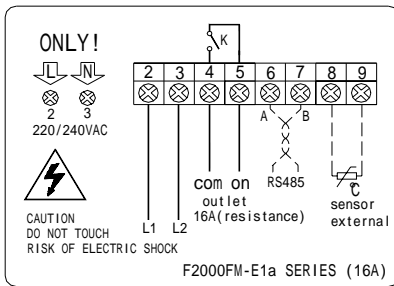
F2000LB-H1



F2000LB-TH-K01/K02



F2000LH-RE-01



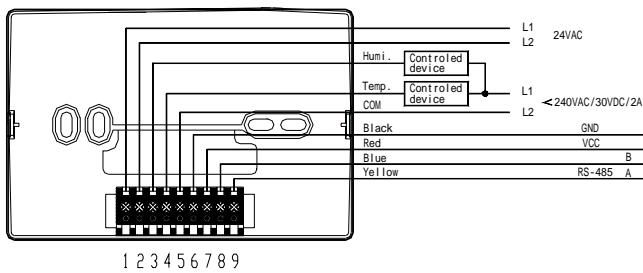
F2000LH-RE-PnP



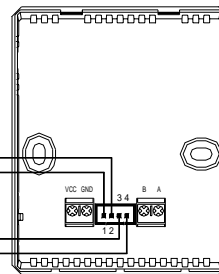
To power supply of 220VAC/240VAC

The power socket of 220/240VAC for controlled dehumidifier's

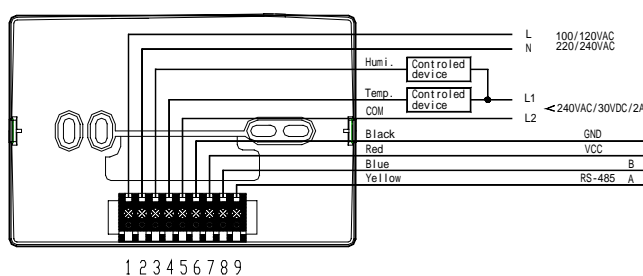
F2000P-TH-02-TSM-(C)



F2000TSM-TH-M201/D201-N



F2000P-TH-02-TSM-(A)/(B)



F2000TSM-TH-M201/D201-N

