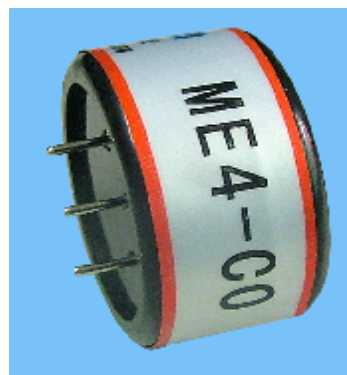


ME4-CO Gas Sensors Manual

1 Feature

ME series CO sensors have low consumption, small size, high sensitivity, wide range of linearity, and better anti-jamming capacity, good reproducibility, stability and reliability ect advantage. It is electrochemical sensor widely suits for mine, industry and environmental protection field ect .



2 Application

Type	Detecting Object	Use	Remark
ME4-CO	CO	Detecting CO in industry, mine and environmental protection field	

3 Feature

3.1 Parameter

3.1.1 Basic feature

Measurement Range	0-500ppm	0-1000ppm	remark
Sensitivity($\mu A/ppm$)	0.10 ± 0.02	0.06 ± 0.02	
Reproducibility	Output signal $\pm 2\%$	Output signal $\pm 2\%$	
Response time(t_{90}) s	≤ 30	≤ 30	
Signal attenuation	$\leq 2\%$	$\leq 2\%$	/month
Zero drift (ppm)	-5~10	-5~10	Clean air
Temperature range (°C)	-20~+50	-20~+50	
Temperature drift (ppm)	≤ 10	≤ 10	20~50°C
Humidity range	$\leq 95\%RH$	$\leq 95\%RH$	
Pressure range (kPa)	90~110	90~110	
Storage temperature (°C)	0~20	0~20	recommendatio
Storage period (month)	6	6	
Anticipated using life (month)	>24	>24	
Max detecting concentration	1000	2000	

3.1.2 Products external dimension

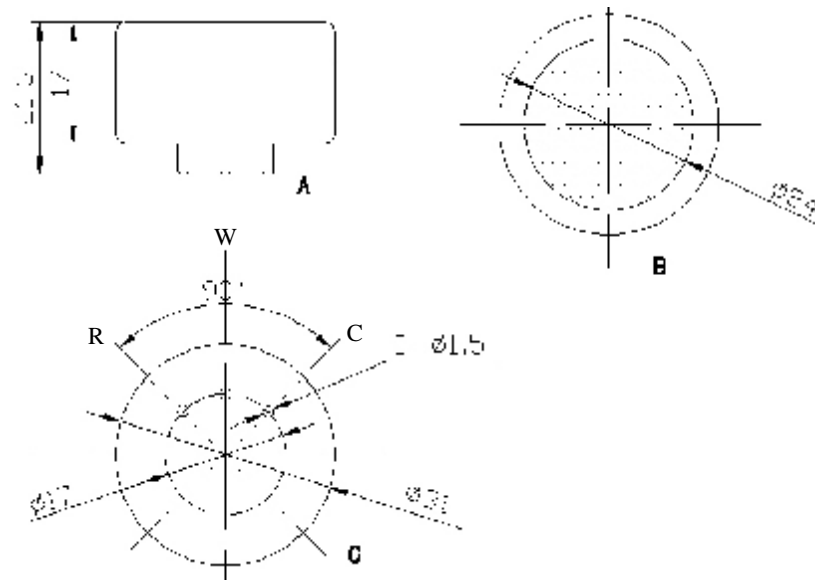


Chart 1. products external dimension

3.2 Gas sensitivity

3.2.1 CO Electrochemical sensor concentration response characteristic curve

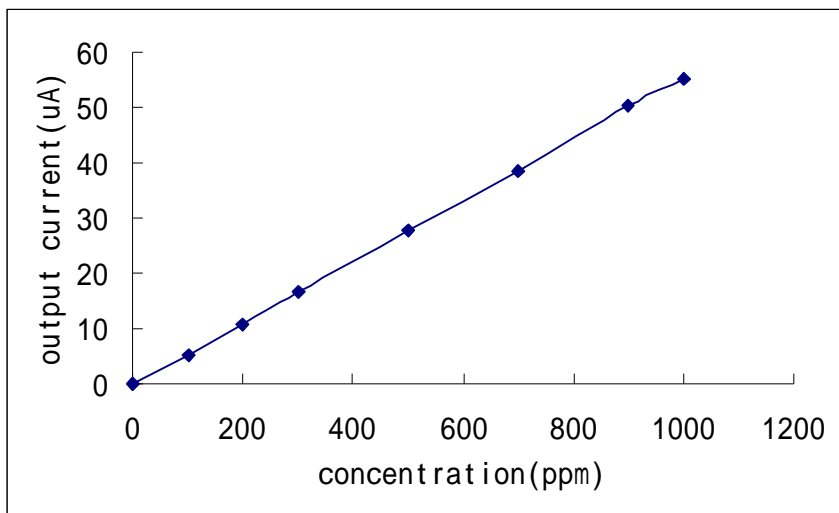


Chart 2 .sensitivity curve

3.2.2 ME4-CO type electrochemistry sensors' response, resume time and output current relation curve

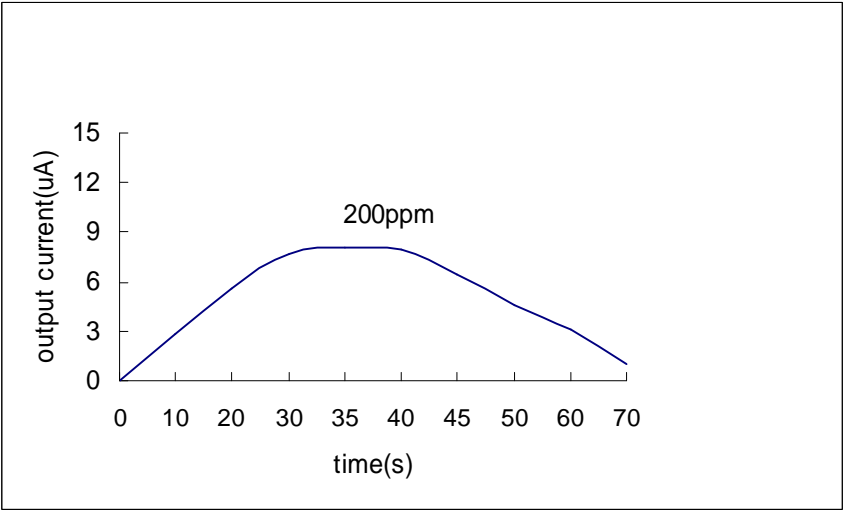


Chart 3.response and resume curve

3.2.3 Temperature characteristic

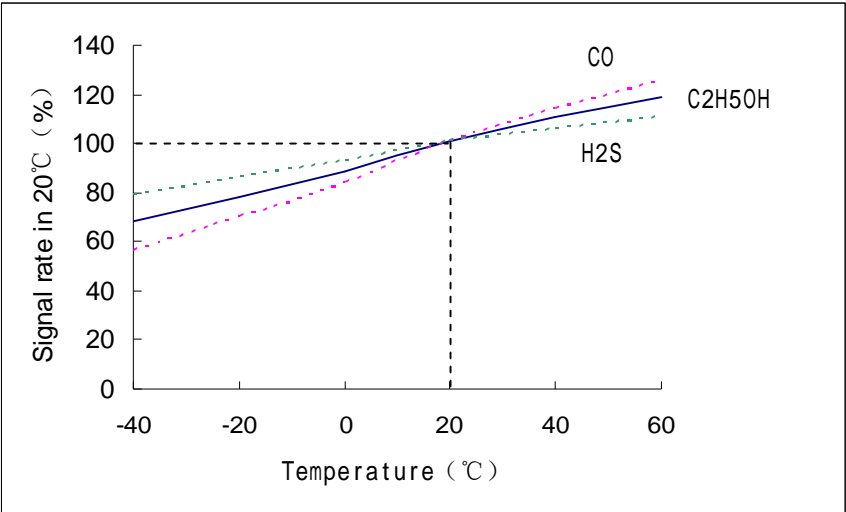


Chart 4. Temperature curve